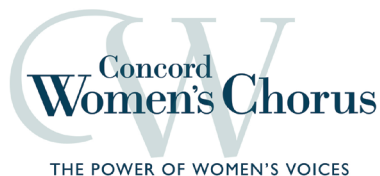


Radiant Light: A Celebration of the Season

December 6, 2025





***The Village Bank proudly
supports the Concord
Women's Chorus and its
2025-26 season!***



Auburndale • Newton Centre • Newton Highlands • Newtonville
Nonantum • Waban • Waltham • Wayland • West Newton
www.village-bank.com • Customer Care Center (617) 969-4300



Member FDIC | Member DIF
NMLS# 408536



Concord Women's Chorus

presents

Radiant Light: A Celebration of the Season

Jane Ring Frank, Artistic Director

Simon Andrews, piano

With special guest artists

Anne-Marie Chubet, *violin*

Andrew Koutroubas, *cello*

Gary Fieldman, *djembe*

Program Notes

Welcome to Concord Women's Chorus fall concert – an exploration of the season's golden light, joy, rhythm, and sacredness. We hope to give you a few pieces you know well (but perhaps in a new way!) and some repertoire that is wholly new and meaningful.

We open today's concert with one of my favorite pieces: a new melodic setting of the famous "O Come, O Come, Emmanuel." Composer Elaine Hagenberg creates pathos and longing through the creation of a beautiful melody. The cello is a rich addition to the famous text and works beautifully with this modern rendering.

LUX: The Dawn From On High by composer Dan Forrest is a multi-movement work which explores various facets of *Lux* (Latin for "light"), in texts drawn from ancient liturgical chant and Scripture. The music of *Lux*, written in 2018, was inspired by these profound texts; visually by the light in the Reims Cathedral; and musically by a variety of sources from ancient chant to modern minimalist composers.

The title invokes a kind of dual meaning, where the light of dawn gradually ascends into the sky, yet the Light of the World descends from the sky - a "Dawn from on High." From another perspective, the music moves from a day's dawn, through the sun's high point in the sky, and then to the setting of the sun on the horizon at the end of day.

The first movement, "Illuminare," unfolds from a hallowed vocal unison into the luminous transparency of rising sound for which Dan Forrest has come to be known. The ensuing "Lux in Tenebris" employs, as the composer states, "contrasting musical meters and keys to portray its text about light courageously shining in darkness." "Gloria in Excelsis" follows in a joyful syncopated setting about the Nativity, marked by infectious rhythmic energy, soaring vocal lines, and a sparkling accompaniment, leading to the final movement, which is, in the composer's words, "an ancient evening hymn, presented as a solo, then unison, then in increasingly complex canons, before a closing section provides closure and unity between these multiple facets of light."

Ruth Morris Gray is an active music teacher, composer, arranger, choral conductor, clinician, and pianist. We have loved preparing her arrangements! *What Child?* is a joyous and rhythmic arrangement of the traditional hymn. *Stars I Shall Find* offers an artful setting of Sara Teasdale's serene and expressive poetry. The last in our set is Gray's exciting *Siyahamba*, constructed upon a set of stacking voices, accompanied by lively and steady djembe.

The final piece on our program is Forrest's achingly beautiful *Shalom*, set

for chorus, piano, and violin. This tender and comforting work is a “passing of peace” as its simple yet elegant melody washes over the listener, gently unfolding increasing texture: “Peace I leave with you, my peace I give to you, not as the world gives; do not be afraid.” The Hebrew word “shalom” forms the refrains, and whispers of the word “peace” further paint the spirit and promise of the text.

As always, thank you for your support. Thank you for finding us in today’s venue, Trinitarian Congregational Church. We are grateful to TriCon for hosting us and making us feel welcome. May the joy and sacredness of the season be yours. I look forward to seeing you immediately after the concert.

With light and gratitude,

Jane

Jane Ring Frank
Artistic Director

Concord Women’s Chorus congratulates Jane Ring Frank on her Choral Arts New England’s 2025 Lifetime Achievement Award for lifelong dedication to excellence, innovation, and the transformative power of choral music!

Concord Women’s Chorus

THE POWER OF WOMEN’S VOICES | JANE RING FRANK, DIRECTOR

A Light Exists in Spring
Saturday, May 9, 2026 at 4:00 pm

Trinity Episcopal Church
81 Elm Street, Concord, MA

For tickets and information: www.concordwomenschorus.org

Concert Program

Radiant Light: A Celebration of the Season

Jane Ring Frank, *conductor*
Simon Andrews, *piano*

Anne-Marie Chubet, *violin*
Andrew Koutroubas, *cello*
Gary Fieldman, *djembe*

O Come, Emmanuel [2016] Elaine Hagenberg (b. 1979)
Latin, trans. John M. Neale (v.1 , v. 2), Henry S. Coffin (v. 3)

Lux: The Dawn from on High [2018] Dan Forrest (b. 1978)
Pamela Schweppe & Amanda Kern, sopranos

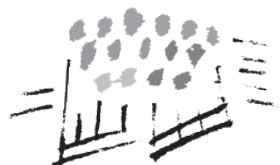
“Illuminare”

“Lux in Tenebris”

“Gloria in Excelsis”

“Creator of the Stars of Night”

Thank you to Choral Arts New England for the
Alfred Nash Patterson Grant Award
(the Hammond Family Award).



What Child? [2018]

arr. Ruth Morris Gray (b. 1961)/
William C. Dix (1837-98)

Stars I Shall Find [2015]

Gray/ Sarah Teasdale (1884-1933)

Siyahamba [2019]

South African Folksong / arr. Gray
(*We Are Marching in the Light of God*)

Shalom [2020]

Forrest/John 14:27



Our Special Thanks To:

Rick Krug, printing
Danielle King, graphics
Stoney Ballard, programs, graphics and audio recording
Trinitarian Congregational Church
The Rev. Nancy J. Hagner, Rector, and
Robert Barney, Director of Music, Trinity Episcopal Church
and Donors who generously support us

Program Texts

O Come, Emmanuel [2016]

Latin trans. John M. Neale (verses 1-2)
Henry S. Coffin (verse 3)

O come, o come, Emmanuel,
And ransom captive Israel,
That mourns in lonely exile here
Until the Son of God appear.
O come thou dayspring come and cheer
Our spirits by Thine Advent here,
And drive away the shades of night,
And pierce the clouds and bring us light!

Rejoice, Emmanuel,
Shall come to Thee O Israel.

O come Desire of nations bind
All people in one heart and mind;
Bid envy, strife, and quarrels cease,
And fill the world with heaven's peace.
Rejoice, Rejoice!

LUX: The Dawn from on High

“Illuminare”

Luke 1:78-79, Antiphon for Epiphany. 14 c.

Per viscera misericordiae
Dei nostri
in quibus visitavit
nos oriens ex alto
illuminare his qui in tenebris
et in umbra mortis sedent
ad dirigendos pedes nostros
in viam pacis.
Lux ex alto,
Veni nos illuminare.

By the mercy of our God
the dawn from on high
will break upon us,
to give light to those
who sit in darkness
and in the shadow of death,
to guide our feet
Into the way of peace.
Light from on high
Come illumine us.

Lux de luce apparuisti Christe
Cui Magi munera offerunt,
Alleluia, alleluia, alleluia.

You appeared as Light from light
O Christ, to whom the Magi offered gifts,
Alleluia, alleluia, alleluia

“Lux in Tenebris”

Introit for Christmas Dawn, 10th c., John 1:5

Lux fulgebit hodie super nos,
Quia natus est nobis Dominus.
Lux in tenebris lucet
Et Tenebrae eam non superaverunt.

A light will shine on us today,
For the Lord is born unto us.
The light shines in darkness;
and the darkness has not overcome it.

“Gloria in Excelsis”

Luke 2:14

Gloria in excelsis Deo,
Et in terra pax.

Glory to God in the highest,
And on earth, peace.

“Creator of the Stars of Night”

17th c. chant, various translations

Creator of the stars of night, Thy people's everlasting Light, O Christ, Thou Savior of us all, Now hear Thy servants when they call.	Creator alme siderum aeterna lux credentium Christe redemptor omnium exaudi voces supplicum.
--	---

When the whole world drew on toward night,
Thou camest, not in splendor bright
As sovereign, but the humble Child
Of Mary, virgin mother mild.

To God the Father, God the Son,
And God the Spirit, Three in One,
Laud, honor, might, and glory be
From age to age eternally. Amen.

It lights the Whole Sky. Amen

What Child?

William C. Dix (1837-98)

What child is this, who, laid to rest
On Mary's lap is sleeping?
Whom angels greet with anthems sweet,
While shepherds watch are keeping?
Oh, this, this, is Christ the king,
Whom shepherds guard and angels sing:
Oh, haste, haste to bring him laud,
the babe, the son of Mary.
So bring him incense, gold, and myrrh,
come peasant, king to own him.
The king of kings, salvation brings,
let loving hearts enthrone him.
So raise, raise the song on high
while Mary sings her lullaby.
Sing joy, for Christ is born,
the babe, the son of Mary.

Stars I Shall Find

Sarah Teasdale (1884-1933)

There will be rest, and sure stars shining
Over the roof-tops crowned with snow,
A reign of rest, serene forgetting,
The music of stillness holy and low.
I will make this world of my devising
Out of a dream in my lonely mind.

I shall find the crystal of peace, – above me
Stars I shall find.

Siyahamba

South African Folksong

Siya , siya, siyahamba
Siyahamba kukha nyeni kwen khos.

We are marching in the light of God.

Shalom [2020]

John 14:27

Peace, I leave with you,
Peace, I givev to you,
Peace, Shalom.
Not as this world gives,
I give to you.
Do not be afraid.
Shalom, my peace I give to you.
Peace.



Traditional Carols

Silver Bells

City sidewalks, busy sidewalks,
Dressed in holiday style.
In the air there's a feeling of Christmas.
Children laughing, people passing,
Meeting smile after smile.
And on every street corner you'll hear:

Silver bells, silver bells,
It's Christmas time in the city.
Ring-a-ling, hear them ring,
Soon it will be Christmas Day.

Have Yourself a Merry Little Christmas

Have yourself a merry little Christmas,
Let your heart be light!
From now on our troubles will be out of sight.

Have yourself a merry little Christmas,
Make the Yuletide gay:
From now on our troubles will be miles away.

Here we are as in olden days,
Happy golden days of yore.
Faithful friends who are dear to us
Gather near to us once more.

Through the years we all will be together;
If the fates allow;

Hang a shining star upon the highest bough.
And have yourself a merry little Christmas now.

The First Nowell

The first Nowell the angel did say
Was to certain poor shepherds in fields as they lay;
In fields as they lay keeping their sheep,
On a cold winter's night that was so deep.

Nowell, nowell, nowell, nowell.
Born is the King of Israel.

Then entered in those wise men three
Fell rev'rently upon their knee,
And offered there in his presence
Their gold, and myrrh, and frankincense.

Nowell, nowell, nowell, nowell.
Born is the King of Israel.

White Christmas

I'm dreaming of a white Christmas
Just like the ones I used to know.
Where the treetops glisten
And children listen to hear
Sleigh bells in the snow.

I'm dreaming of a white Christmas
With every Christmas card I write.
May your days be merry and bright,
And may all your Christmases be white.

Silent Night

Silent night, holy night,
All is calm, all is bright.
Round yon virgin, mother and child.
Holy infant so tender and mild.
Sleep in Heavenly peace,
Sleep in Heavenly peace.

Silent night, holy night.
Shepherds quake at the sight,
Glories stream from Heav'n afar.
Heavenly hosts sing Alleluia!
Christ the Savior is born,
Christ the Savior is born.



Jane Ring Frank, Artistic Director

Conductor **Jane Ring Frank** stands among Boston's most accomplished and sought-after choral conductors. Known for her unerring ear for intonation and color, her command of both choral and orchestral repertoire, and her uncompromising musical scholarship, she has spent more than three decades shaping the region's choral landscape with vision, artistry, and care. Ms. Frank recently received Choral Arts New England's 2025 Lifetime Achievement Award for lifelong dedication to excellence, innovation, and the transformative power of choral music.



Ms. Frank began her conducting career at California State University, Long Beach, where she became Associate Conductor of the premiere 70-voice University Choir, staff pianist, and musical director/conductor for the Department of Theatre Arts. She also worked as a *répétiteur* with professional opera companies in Los Angeles, including the Los Angeles Music Center Opera and the Long Beach Opera Company. Artistic mentors include Paul Salamunovich, Frank Pooler, Randall Behr (former conductor and music director of the Department of Vocal Arts, Juilliard Opera Center, and former resident conductor, Los Angeles Music Center Opera) and Michael Carson (conductor, Lake George Opera).

Ms. Frank moved to Boston in 1991 to conduct at Harvard University. For twelve years, she was also the critically acclaimed Founding Artistic Director of Boston Secession (1998–2009), hailed by *The Boston Globe* as an “extraordinary chorus, notable for its beautiful balance, musical surety, and English-styled straight-toned singing.” With Boston Secession, she conducted and produced two recordings—*Afterlife: German Choral Meditations on Mortality* and *Surprised by Beauty: Minimalism in Choral Music*—both widely praised by *The New York Times*, *Gramophone*, and *American Record Guide*.

Since 2003, Ms. Frank has also held the position of Minister of Worship and the Arts at the First Congregational Church in Winchester. She has recently retired from Brandeis University, after 21 years as a Senior Resident Scholar at the Women's Studies Research Center. From 2011–22, Ms. Frank was Artistic Director of Cantemus Chamber Chorus on Boston's North Shore. For a number of years, she served as Con-

ductor of E.C.S. Publishing Company's professional recording choral ensemble, Philovox, and was a 10-year voice faculty member at Emerson College. She is currently in her 32nd year as Artistic Director of the Concord Women's Chorus, a 45-voice ensemble based in Concord, Massachusetts. The chorus prides itself on commissioning and performing challenging, new music written especially for women's voices by women composers. Ms. Frank has conducted ensembles across Europe, Australia, and New Zealand and spent six years as a guest conductor and educator at the Gitameit Music Centre in Yangon, Myanmar.

Simon Andrews, Accompanist

Simon Andrews is an English composer-conductor living in Massachusetts. His output ranges from large-scale orchestral works and opera to intimate chamber music, with a special delight in chamber music with solo voices.

Winner of the 1985 Benjamin Britten Prize, his music has been commissioned, performed and recorded by the London Symphony Orchestra, The Janacek Philharmonic, the Britten-Pears Orchestra, the Berkeley Symphony, the Lancaster Symphony Orchestra and Chorus, the Cypress Quartet, and Catalyst New Music and many others. His edition-completion of Süssmayr's contribution to the Mozart Requiem has been performed to critical acclaim in England and America, and led to an accompanying book: *Mozart's Requiem: from 18th century forgery to modern hybrid*.



Gramophone magazine described the title track of his CD *And that moment when the bird sings* as “a clarinet quintet of lyrical impulse” and The heart has narrow banks as “an art song par excellence.” His *Till voices wake us* was recorded by the Janáček Philharmonic in 2021 and Interlude No. 3 “Battle Music” (from his opera *The scars on his back*) by the London Symphony in 2022.

Before moving to Massachusetts, he maintained a lively career as a choral conductor at Franklin & Marshall College, the Harrisburg Choral Society, Millersville University, Harrisburg Opera Chorus, and worked with opera companies on both coasts, Berkeley Opera (now West Edge Opera), Berkeley Contemporary Opera, North Bay Opera, Concert Opera of Philadelphia and Opera Lancaster. He is currently organist at First Parish in Concord, MA and accompanist for the Concord Women's Chorus.



Love to Sing?

CWC will hold open rehearsals on January 13 and 20 with auditions on January 20 and 27. Join us! Learn about our spring concert and discover what fun it is to make beautiful music together!

Please let us know you are coming by contacting:
manager@concordwomenschorus.org.
 And check our website for more information.



CWC members sing at Carnegie Hall

The Chorus

Soprano I

Penny Blevins, Jane Fisher*, Elizabeth Hoermann, Amanda Kern,
Jane Luckner, Ellen Materne, Liz Megerle, Bonnie Mohr*,
Juliánna Nagy, Pamela Schweppe, Bozena Smith, Jeannette Taylor,
Heidi Unger-Dowd, Rosalind Walter

Soprano II

Michele Abroff, Sara Ballard, Elaine Chertavian*, Lee Ann Cohen,
Suellen Davidson, Linde Dynneson, Allison Hope Jones*,
Judi Kotanchik, Martha Lang, Denise McNamara*, Susan Mills,
Lisa Pohl, Marcie Troisi

Alto I

Susan Avery, Sue Beck*, Amy Davis, Suzanne Frank, Faxon Green*,
Barbara Keller, Rowena Nelson, Cynthia Nunan, Stephanie Smith,
Cynthia Sorn, Diane Taraz, Emily Teller

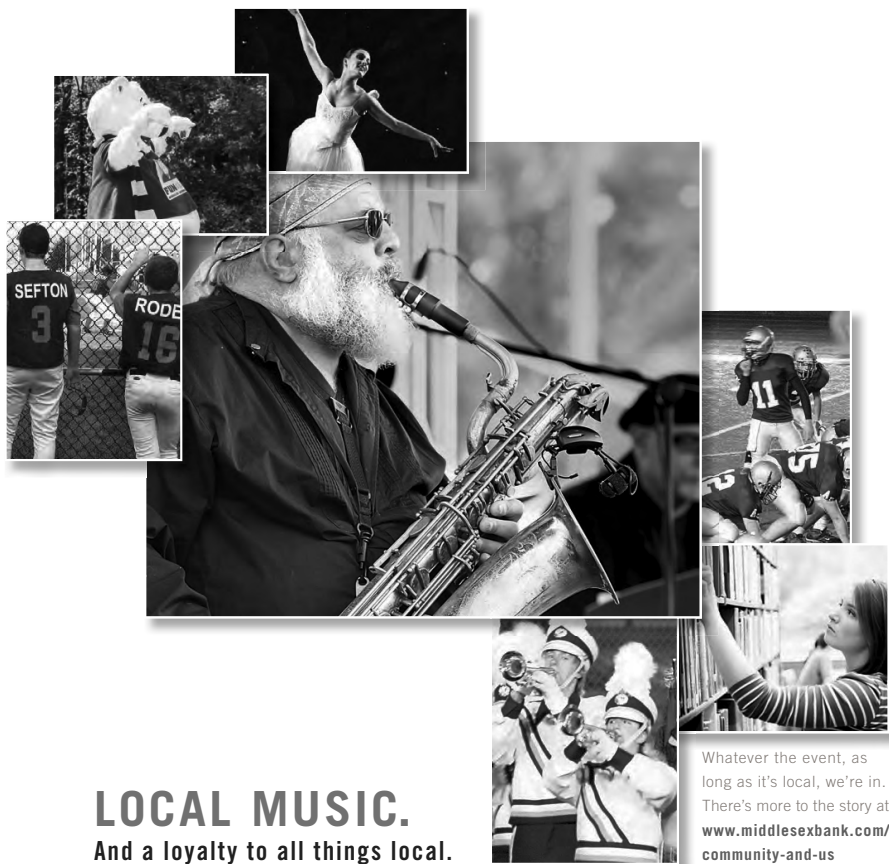
Alto II

Elizabeth Berk, Janet Clark, Pamela Dritt, Jane Farber, Angela Healy,
Jennifer Kobayashi, Danielle Murstein*, Judy Perkins, Lisa Sandeen

*indicates member of Board of Directors



Special Thank You to all of our wonderful members who volunteer for so many behind the scenes tasks that make presenting a concert possible!



LOCAL MUSIC.

And a loyalty to all things local.



Whatever the event, as long as it's local, we're in. There's more to the story at www.middlesexbank.com/community-and-us

Sponsors and Donors

2025 – 2026 Season

Melissa Apperson
Susan Avery
Sara and Stoney Ballard
Elizabeth Berk
Pengwynne Blevins
Elaine and Lee Chertavian
Janet Clark
Martha Comfort
Suellen Davidson
Amy Davis
Pamela Dritt
Linde Dynneson
Jane Fisher and Thomas Brosnahan
Jane Ring Frank
Suzanne Frank
Faxon Green
Grasshopper Shop of Concord
Elizabeth and William Hoermann
Allison Hope Jones
Barbara Keller
Jennifer Kobayashi
Judith Kotanchik
Lori Locasio

Jane Andrews Luckner
Ellen Materne
Denise and Thomas McNamara
Elisabeth Megerle
Susan Mills
Bonnie Mohr
Kathleen Molony
Danielle Murstein
Juliánna Nagy
Kiernan and Cynthia Nunan
Judith Perkins
Lisa Sandeen
Pamela Schweppe
Bozena Smith
Stephanie Smith
Cynthia Sorn and Paul Anagnostopoulos
Diane Taraz
Jeannette Taylor
Emily and Tom Teller
Marcie and Nick Troisi
Heidi Unger-Dowd
Rosalind M. Walter



Please consider making a donation to Concord Women's Chorus.

Scan the QR code or go to

www.concordwomenschorus.org

This program is funded in part by grants from the Acton-Boxborough, Carlisle, Concord, Lexington, and Westford Councils for the Arts, local agencies which have been supported by the Massachusetts Cultural Council, a state agency.



svenfish

Crazy Fresh Fish!

Svenfish Fish Market
25 Powder Mill Road in Acton, MA
www.svenfish.com

Artisans Way

Fine Art & Contemporary Craft



18 Walden Street, Concord, MA
(978) 369-4400

artisansway@verizon.net
www.artisansway.net



**FROM OUR FARM
TO YOUR TABLE**

Serving seasonal menus & craft beer
highlighting ingredients from our
70 year old working farm

We also offer catering services for social
and corporate events of any size.

www.saltboxkitchen.com
978-610-6020

J. McLAUGHLIN

JOIN US

Celebrate the Season

Join us for a festive afternoon
of sips and holiday shopping!

FRIDAY, DECEMBER 19TH

12 – 4PM

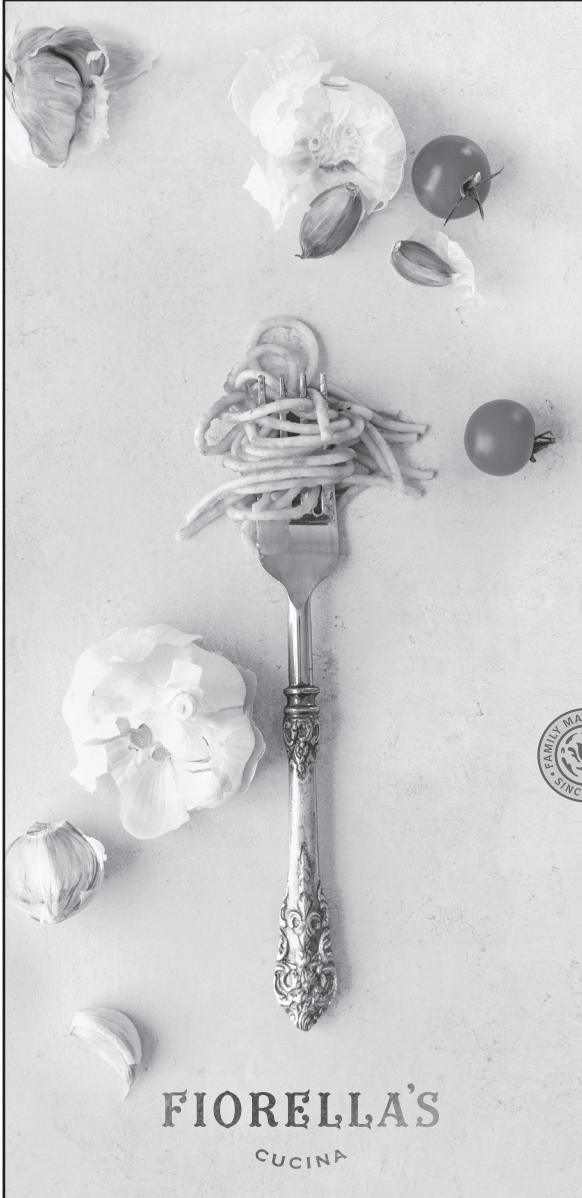
J. McLAUGHLIN

14 Walden St. • Concord, MA
978.776.6997

10% of sales will benefit
Concord Women's Chorus



Holidays made easy: Enjoy curbside pickup & custom gift wrap



FIGRELLA'S
CUCINA

Community
FUNDRAISER:

**CONCORD
WOMEN'S CHORUS**

**THURSDAY
DECEMBER 11**

Fiorella's will donate
**15% OF SALES ON THIS DATE
WHEN YOU:**

- **CALL** Please mention the fundraiser
- **DINE-IN** Please present this flyer or mention the fundraiser to your server
- **ORDER ONLINE** Please select it from our fundraiser section & add it to your order before checking out



VALID IN:
CONCORD

24 Walden Street
978.341.9999



SCAN TO ORDER

WWW. *Fiorellas* .COM



Artinian Jewelry

*Custom Design, Jewelry Repairs
Watches & Appraisals*

781-863-9818
1734 Massachusetts Avenue
Lexington, MA 02420

978-371-7110
39 Main Street
Concord, MA 01742

www.ArtinianJewelry.com
info@ArtinianJewelry.com

Joe Saia

Chris Saia

West Concord Wine and Spirits

"The place to go when your
spirits are low!"

1216 Main Street
W. Concord, Mass. 01742
Email: joe@westconcordliquors.com

Tel. (978) 369-3872
Fax (978) 369-9562

Buddy Dog Humane Society

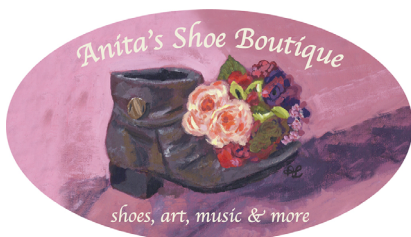


Adopt your forever friend

Dog and Cat Adoptions
151 Boston Post Rd
Sudbury, MA 01776

buddydoghs.org
978-443-6990

Anita's Shoe Boutique



62 Great Road

Acton, MA

978-523-4010

Closed Sunday/Wednesday

107 Commonwealth Ave

West Concord, MA

978-680-5063

Closed Sunday/Monday



Celebrating Priceless Legacies

Heritage Chorale's 89th Concert Season

Mozart's Requiem

FALL CLASSICAL CONCERT

Sunday, November 23, 2025, 4:00 pm

St. Mark's School, Southborough

Page to Stage — A Literary Journey

WINTER POPS CONCERT

Saturday, February 21, 2026, 7:00 PM

Fuller Middle School, Framingham


America at 250 — Of Thee We Sing

SPRING CONCERT

Sunday, May 31, 2026, 4:00 pm

Fuller Middle School, Framingham

WWW.HERITAGECHORALE.ORG



Helen's
featuring
Brigham's Ice Cream

••• www.helensrestaurantmenu.com •••

17 Main St, Concord, MA 01742, USA
(978) 369-9885

The Culinary Guild
of New England



Feed Your Passion

Email: culinaryguild@gmail.com
 Website: culinaryguild.org
 Facebook: facebook.com/culinaryguild

COLONIAL COMPLETE
COLLISION CENTER • SERVICE CENTER • PARTS • SALES



171 GREAT ROAD • ACTON, MA 01720 • BUYCOLONIALCHEVROLET.COM • (978) 263-1000

80th Anniversary Season 2025-26

Concord Chorus

Kevin Leong, *Music Director*



Winter Concerts

Featuring works by Brahms, Gjeilo, Gounod, Palestrina, Still, Stainer & Vaughan Williams, and traditional carols with audience participation

Saturday, December 13, 2025

at 2:00PM and 5:00PM

Memorial Chapel, Middlesex School,
1400 Lowell Rd, Concord, MA

Brahms: A German Requiem

a special collaboration with
Masterworks Chorale

& Pro Arte Chamber Orchestra, *with*

Carley DeFranco, *soprano*

Dana Whiteside, *baritone*

Also including

a new work for the 80th anniversary of the
Concord Chorus by Jonathan Bailey Holland

Sunday, May 17, 2026 at 3:00PM

Cary Hall, 1605 Massachusetts Ave,
Lexington, MA

See concordchorus.org for more information. The chorus will also have open rehearsals and auditions January 5 & 12, 2026.



Mass
Cultural
Council

The Concord Chorus gratefully acknowledges the support of the Mass Cultural Council and the local cultural councils of Acton-Boxborough, Bedford, Carlisle, Concord, and Lexington, which are supported by the Mass Cultural Council, a state agency.



C O N C O R D
P R I N T I N G

97 Thoreau Street, Concord, MA 01742

P 978.369.4630

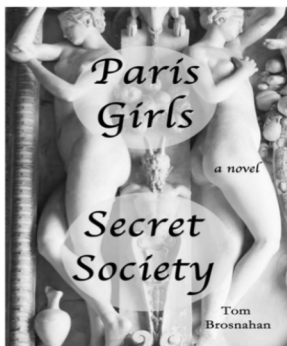
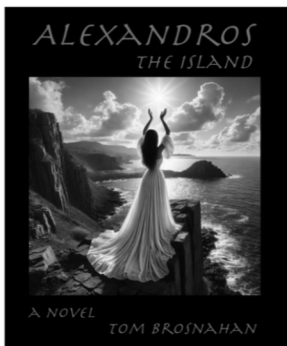
service@concord-printing.com

programs • architectural drawings • offset printing

lawn signs • banners • booklets • binding • postcards

graphic design • mailing services • business cards

Specializing in non-profit fundraising



Novels

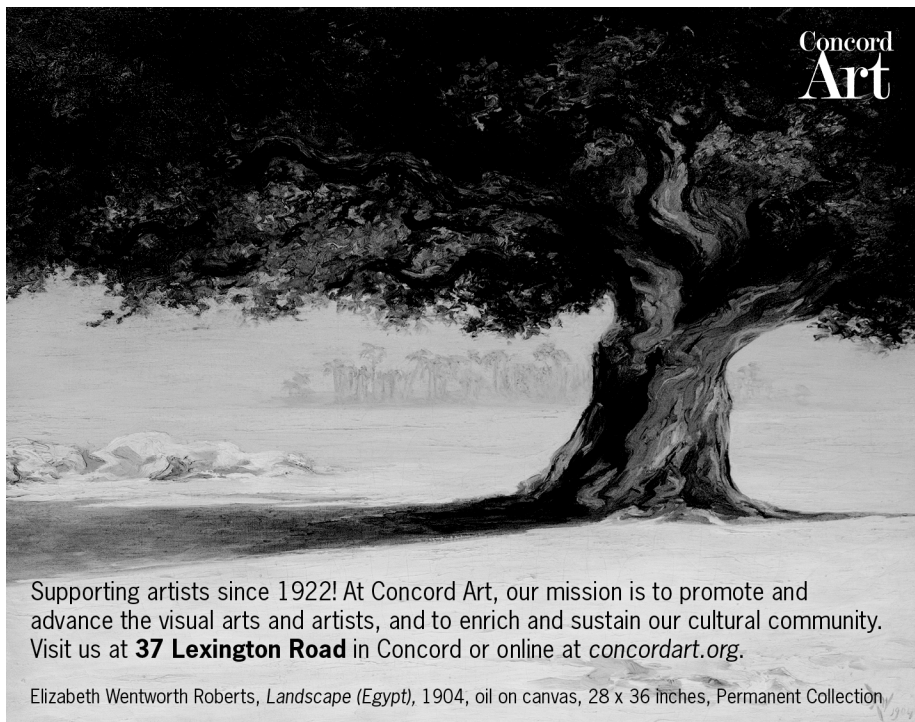
by Concord author
Tom Brosnahan

available on Amazon.com

TravelInfoExchange.com



Photo © Jane A Fisher



Supporting artists since 1922! At Concord Art, our mission is to promote and advance the visual arts and artists, and to enrich and sustain our cultural community. Visit us at **37 Lexington Road** in Concord or online at concordart.org.

Elizabeth Wentworth Roberts, *Landscape (Egypt)*, 1904, oil on canvas, 28 x 36 inches, Permanent Collection



Redefining Retirement



Vibrant, engaging, and maintenance-free lifestyle on a beautifully wooded campus



Trustworthy services and programs that enhance your life while you stay in your own home

CONTACT US TODAY TO LEARN MORE

781.275.8700 | www.cwvillage.org



Brake &
Suspension
Specialists

Car Care Network

- Mass State Inspection
- Domestic & Foreign Vehicles
- Trained Technicians

CONCORD Mobil

AUTOMOTIVE REPAIRS

Towing/Road Service

CHARLIE AUDI

(978) 287-0168

(978) 287-0169

143 Sudbury Rd.
Concord, MA 01742



*Call, email or text us when you're thinking of a move
and we hope you enjoy the show!*

Brigitte, Amy & Lisa

Senkler, Pasley & Whitney

#1 in Concord & Carlisle since 1998

#2 Team in New England • #7 Nationwide

Top 1% Worldwide with Coldwell Banker Realty



Brigitte Senkler
508.935.7496



Amy Pasley
617.571.7826



Lisa Whitney
508.843.8526



**COLDWELL BANKER
REALTY**

senklerpasleywhitney.com
23 Monument Street, Concord, MA 01742

Direct Team Line: 978.505.2652





BREWERY & RESTAURANTS

5 Strawberry Hill Road
Acton MA
visitrapscallion.com



Visit our website at ColonialSpirits.com
to see our events calendar and
sign up for email to receive exclusive offers.

Cheers!

The area's finest wine, beer and liquor – with service to match!

87 Great Road ✪ Acton ✪ 978.263.7775



Merlin's Silver Star

Thank you for the music and keeping the arts alive and celebrated.

Merlin's Silver Star / Hilary Taylor
336 Baker Ave W. Concord
Holiday gifts, Mothers Day, graduation.
MerlinsSilverStar.com
978-590-6464



Coming in March! Concord Women's Chorus
celebrates Women's History Month!



In "Winning the Vote,"
chorus member Diane Taraz
traces the very long road to
the 19th Amendment,
enlivened by some of the
compelling songs that
argued the issue.





New Patient Offer

Schedule your Free Consultation to claim \$150 off your Treatment Package today*

\$150 off

TREATMENT PACKAGES

(978) 263-2777

ACTON
145 GREAT ROAD
LASER MD® | med spa



*terms apply - minimum purchase may be required offer valid thru 12/31/26



seraphim

*Choral Music to Illuminate,
Challenge, and Inspire*

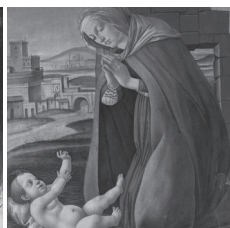
2025-2026: LEGEND AND LEGACY



DANSE MACABRE

SATURDAY
November 1, 8 pm
in West Roxbury

SUNDAY
November 2, 3 pm
in Cambridge



A SERAPHIM CHRISTMAS

SATURDAY
December 20, 8 pm
in West Roxbury

SUNDAY
December 21, 3:00 pm
in Newton Centre

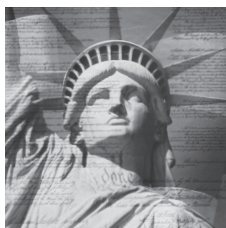
SUNDAY
December 21, 7:30 pm
in Cambridge



ALL-NIGHT VIGIL

SATURDAY
March 7, 8 pm
in West Roxbury

SUNDAY
March 8, 3 pm
in Cambridge



TO LOOK FOR AMERICA

SATURDAY
May 2, 8 pm
in Newton Centre

SUNDAY
May 3, 3 pm
in Cambridge

FOR DETAILS AND IN PERSON AND VIRTUAL TICKETS, VISIT WWW.SERAPHIMSINGERS.ORG.



LAWLESS
UPHOLSTERY
AND
FURNISHINGS

(978) 369-6179 | lawlessupholstery.com
119 Commonwealth Avenue, Concord, MA 01742

UPHOLSTERY - CUSTOM FURNITURE - WALL COVERINGS - DRAPERIES



Helen Halloran - Owner

135 Commonwealth Ave
West Concord, MA 01742

978 • 369 • 2404

Helen@TheConcordFlowerShop.com

www.TheConcordFlowerShop.com

kitchen
outfitters

cookware, bakeware,
blenders,

mixers, mashers
& more...



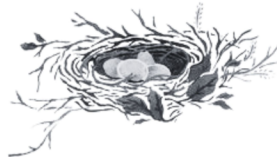
342 Great Road • Acton • 978-263-1955 • www.kitchen-outfitters.com

Open Mon-Sat 9:30—5:30, Thurs til 7pm

Wishing you a season full of happy melodies

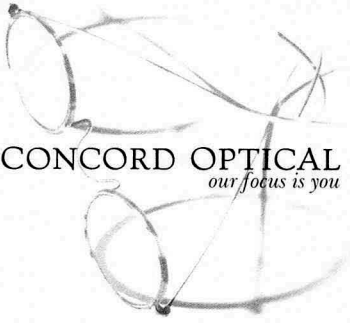
Nesting

v. [nest-ing]: to create
and nurture a warm
and peaceful haven.



Casual Curiosities for the Heart & Home

44 Main St. Concord, MA, 2nd floor
Monday - Saturday 10-5, Sundays 12-5
nestingconcord.com, 978-369-4133



George J. Bourque, Jr.
ABOM, NCLEC, LDO

Tues, Wed, Fri 9-5
Thurs 9-8
Sat 9-5

80 Thoreau Street
Concord, MA 01742
Tel: (978) 369-6707
info@concord-optical.com

Find more choral concerts near you!

We are a proud member of the Greater Boston Choral Consortium, a cooperative association of diverse choral groups in Boston and the surrounding areas.

[View the digital concert calendar](#)



BOSTONSINGS.ORG

GREATER
BOSTON
CHORAL
CONSORTIUM



Where Shopping Is An Old World Pleasure

Hundreds of cheeses and wines to fit all occasions and budgets, plus a full service deli serving pastries, lunches, prepared foods and catering.

Open Tuesday-Saturday 10-5:30

29 Walden Street • Concord, Mass. 978 369-5778

PEDAL POWER

BIKE & SKI

pedpow.com

176 Great Road
Acton, MA 01720

978-263-3197
1-800-479-3197

COMINA

HOME

9 Walden St • Concord • 978-341-0091

Instagram @comina.inc



397 BOSTON POST RD.
WAYLAND, MA 01778
508-358-2283

russellsgardencenter.com

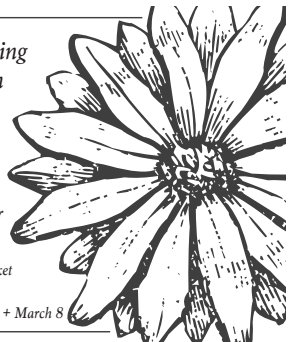
*Celebrating 150 years of being
MetroWest's Go-To Garden
and Gift Destination!*

Annuals • Perennials • Trees • Shrubs
Garden & Bird Supplies • Cut Flowers
Gifts • Toys • Seasonal Greens & Decor

Home of the Wayland Winter Farmers' Market

Saturdays, January 10 - March 14, 2026

2026 Farm Fiber Days Sundays, January 18 + March 8



puck and abby

GATHERED GOODS

Robin Cellucci

Shop Owner

Home Accessories & Gifts

84A Commonwealth Ave Concord MA

781-674-6364

contact@puckandabby.com

www.puckandabby.com

instagram @shoppuckandabby



WE SHARPEN & REPAIR

- KNIVES
- SCISSORS
- GARDEN TOOLS
- LAMPS
- SCREENS
- WINDOWS

28 MAIN ST.

CONCORD, MA 01742

(978) 369-2243

WWW.VANDERHOOFS.COM

WHERE YOUR TRADE HAS BEEN APPRECIATED FOR OVER 100yrs!



*With all your hard work and
effort, we know it will
be a great concert.
Congratulations.*

The Chertavian Family

Willow Tree Farm

Sherborn, MA

www.willowtreehorsefarm.com

stalls available



Craving something sweet?

**Concord Teacakes
has you covered!**

Baked Goods, Custom
Cakes & Cookies, Catering,
To-Go Meals, and More!

ConcordTeacakes.com
@Concord Teacakes
978-369-7644

59 Commonwealth Ave.
Concord, MA 01742



FAIRBANK&PERRY GOLDSMITHS

32 Main Street
Concord Center +
fairbankandperry.com



custom and original
fine jewelry for everyday life





adamsbeasley.com

978.254.5641

Full-Service Custom Builders

Construction Planning

Custom Millwork

Estate Care

Architecture by
WMH Architects

Photo by
Brian Vanden Brink

Building stronger connections with our neighbors and our community is something that brings us great joy. From all of us at Adams + Beasley, we are proud to support the Concord Women's Chorus.



**ADAMS + BEASLEY
ASSOCIATES**

THE ART OF BUILDING BETTER